



CITY OF OCALA
 CITY ENGINEER'S OFFICE
 STORMWATER ENGINEERING DIVISION
 1805 NE 30th AVE, BLDG 600
 OCALA, FLORIDA 34470
 CITY MANAGER - PETER LEE
 CITY ENGINEER - SEAN LANIER

100% PLANS

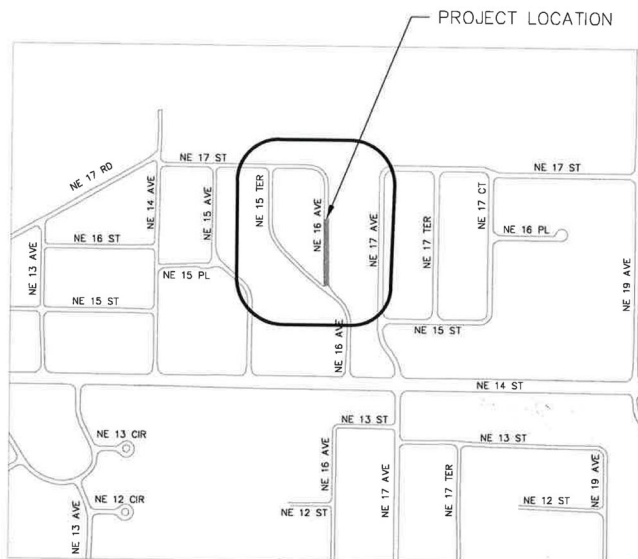
CONSTRUCTION PLANS FOR NE 16th AVE DRAINAGE IMPROVEMENTS

ITB NO. CIP 230427

LOCAL UTILITIES		
UTILITY COMPANY	PHONE NUMBER	EMERGENCY
AT&T	(352) 284-8110	
CENTURY LINK	(352) 368-8817	
COX COMMUNICATIONS	(888) 289-8853	
TECO GAS	(352) 622-0112	(352) 622-0111
CITY OF OCALA ELECTRIC	(352) 351-6650	(352) 351-6666
CITY OF OCALA TRAFFIC	(352) 351-6733	
CITY OF OCALA WATER/SEWER	(352) 351-6772	(352) 351-6775

INDEX OF SHEETS

SHEET NO.	DESCRIPTION
1.	TITLE SHEET
2-3.	GENERAL & CONSTRUCTION NOTES
4.	PLAN & PROFILE (STA. 0+00 TO 2+75)
5.	PLAN & PROFILE (STA. 3+00 TO 4+75)
6.	DRAINAGE RETENTION AREA NOTES
7-7.1	FORCE MAIN ROUTE
8.	CROSS SECTIONS (0+25 TO 1+00)
9.	CROSS SECTIONS (1+50 TO 2+25)
10.	CROSS SECTIONS (2+75 TO 3+25)
11.	CROSS SECTIONS (3+50 TO 4+00)
12.	CROSS SECTIONS (4+25 TO 4+75)
13.	SAW CUT AND MATCH DETAIL AND ROAD TYPICAL
14.	STORMWATER POLLUTION PROTECTION PLAN (SWPPP)
15.	STRIPING PLANS
16-17.	DETAILS SHEETS



SECTION 09, TOWNSHIP 15 SOUTH, RANGE 20 EAST

STATEMENT OF OWNERSHIP

PROPERTY SHOWN AND DESCRIBE HEREON IS OWNED BY THE CITY OF OCALA AND THAT I, MY SUCCESSORS OR ASSIGNED WILL PERPETUALLY MAINTAIN THE IMPROVEMENTS AS SHOWN ON THIS PLAN.

DATE SIGNED: _____
 SEAN LANIER, P.E., CFM
 CITY ENGINEER / DIRECTOR OF ENGINEERING & WATER RESOURCES
 1805 NE 30th AVE, BLDG 600
 OCALA, FL 34470

R. KELLY ROBERTS, P.S.M.
 Professional Surveyor and Mapper No. 5558
 State of Florida, DATE: _____
 Valid only with embossed seal.



PAYAL S. PANDYA, PE, CFM
 Registered Engineer No. 73210
 State of Florida, DATE: _____
 Valid only with embossed seal.

PROJECT DESIGN SPEED = 40 MPH
 PROJECT POSTED SPEED = 30 MPH

Payal S. Pandya
 04/20/2023



**Know what's below.
 Call before you dig.**

DRAWN BY:	MDM/DF
DESIGNED BY:	PSP
PROJ.#:	13201
F.B.#:	569/31
DATE DRAWN:	06/28/19

PREPARED BY CITY OF OCALA
 CITY ENGINEER'S OFFICE
 STORMWATER ENGINEERING DIVISION
 1805 NE 30th AVE, BLDG 600
 OCALA, FLORIDA 34470

1
 OF
 17

U.S. Department of Transportation, Manual on Uniform Traffic Control Devices (2009 Version with Revisions)

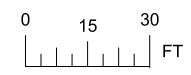
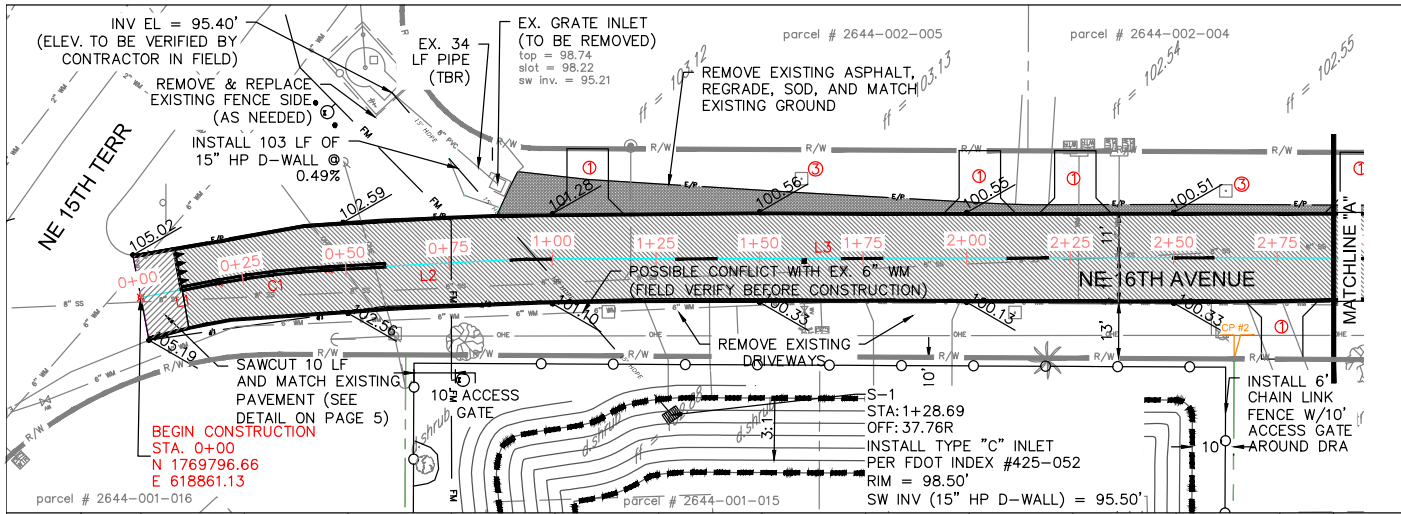
Florida Department of Transportation, Standard Plans for Road and Bridge Construction (FY 2020-2021 Version)

Florida Department of Transportation, Standard Specifications for Road and Bridge Construction (July 2020 Version)

Florida Department of Transportation, Manual of Uniform Minimum Standards for Design, Construction, & Maintenance of Streets & Highways "Florida Green Book" (2016 Version, Effective June 2017)

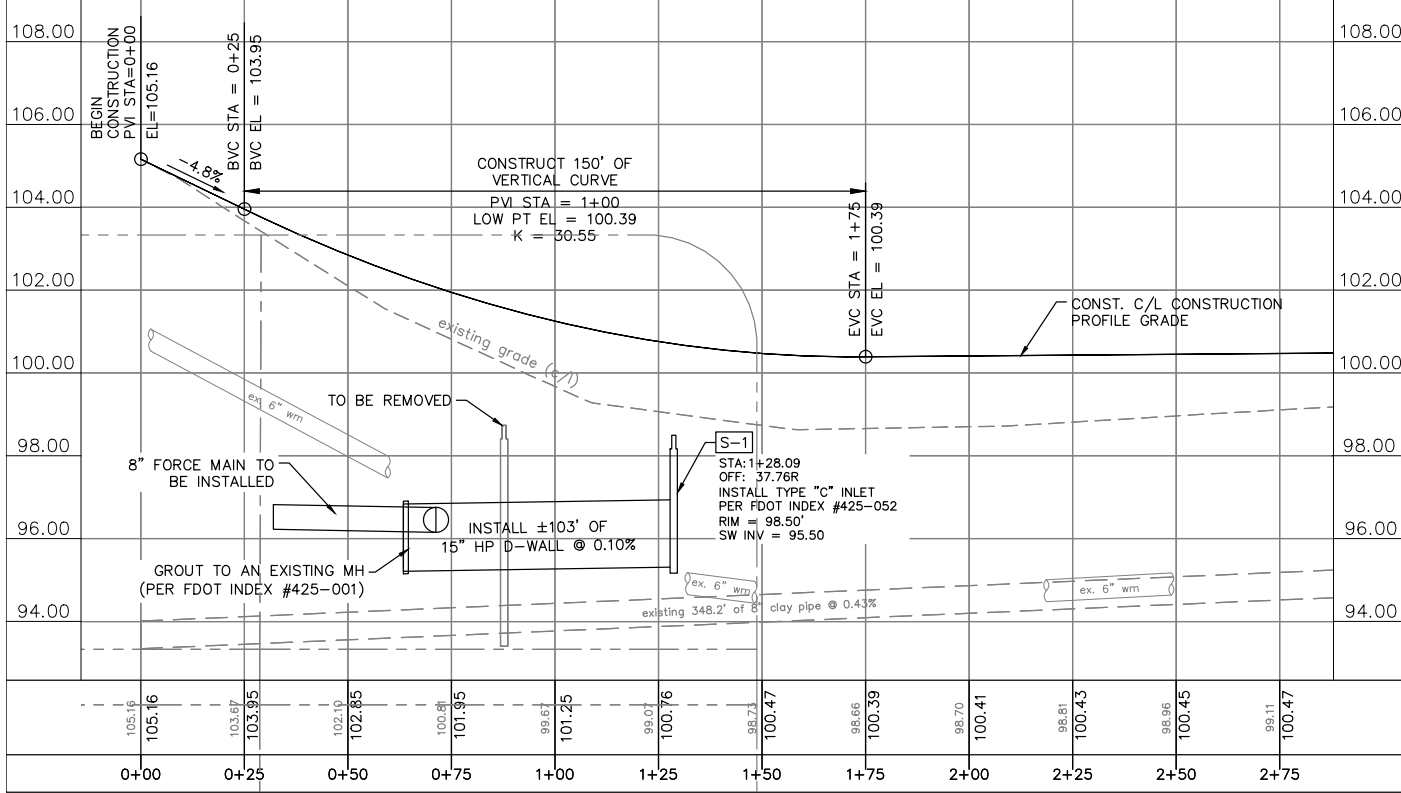
City of Ocala, Land Development Code (FY 2020-2021 Version)

City of Ocala, Standard Specifications For Construction of Streets, Stormwater, Traffic, Water & Sewer Infrastructure (October 2018 Version)



NOTES:

- ① INSTALL 10' WIDE ASPHALT DRIVEWAY to R/W PER DETAIL ON PAGE 16 (TYPICAL 4 PLACES THIS SHEET).
- ③ REMOVE AND RELOCATE EXISTING MAILBOX, AS NEEDED, PER FOOT INDEX #110-200 (TYPICAL 2 PLACES THIS SHEET).



CURVE DATA				
LABEL	DISTANCE	RADIUS	Δ	BEARING
C1	26.78'	200'	8'	N6° 52' 58.66"W
L1	19.18'	--	--	N10° 43' 06.49"W
L2	47.91'	--	--	N3° 02' 50.82"W
L3	156.69'	--	--	N0° 06' 36.14"W
L4	149.46'	--	--	N0° 11' 07.22"E
L5	99.99'	--	--	N0° 44' 10.16"E

DATUM '88

CP #1 (732)
EL = 99.904
4X4 NO ID
N = 1770110.8221
E = 618826.2907

CP #2 (735)
EL = 98.972
4X4 NO ID
N = 1770060.6123
E = 618875.9932

SHEET DESCRIPTION: PLAN & PROFILE (STA. 0+00 TO 2+75)

DATE	REV.	BY

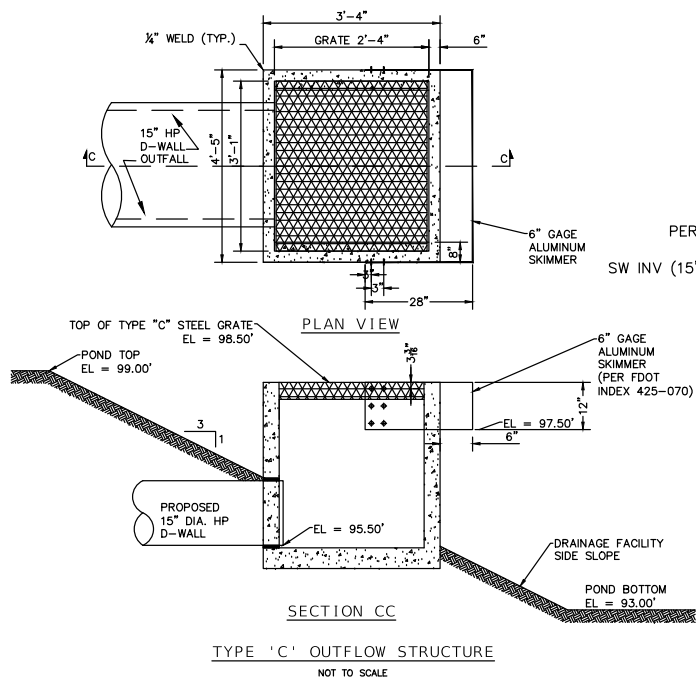
PAYAL S. PANDYA, PE, CFM
Registered Engineer No. 73210
State of Florida, DATE: _____
Valid only with embossed seal.

PROJECT DESCRIPTION: NE 16th AVE DRAINAGE IMPROVEMENTS

PREPARED BY: THE CITY OF OCALA
CITY ENGINEER'S OFFICE
STORMWATER ENGINEERING DIVISION

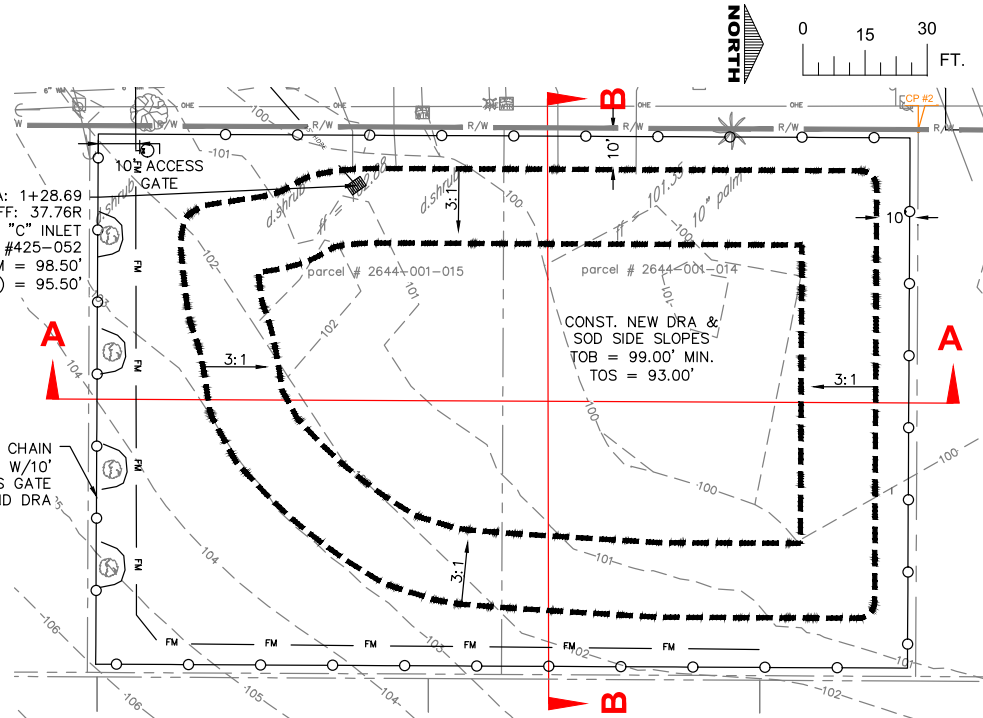
DRAWN BY:	MDM/DF
DESIGNED BY:	PSP
HORIZ.:	1" = 30'
VERT.:	1" = 3'
PROJ. #:	13201
F.B.#:	569/31
DATE DRAWN:	06/28/19

4 OF 17



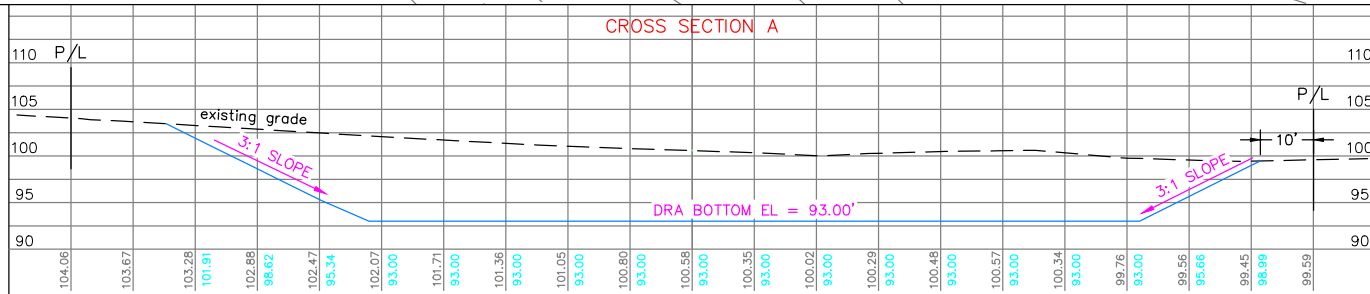
STA: 1+28.69
 OFF: 37.76R
 INSTALL TYPE "C" INLET
 PER FDOT INDEX #425-052
 RIM = 98.50'
 SW INV (15" HP D-WALL) = 95.50'

INSTALL 6" CHAIN
 LINK FENCE W/10'
 ACCESS GATE
 AROUND DRA

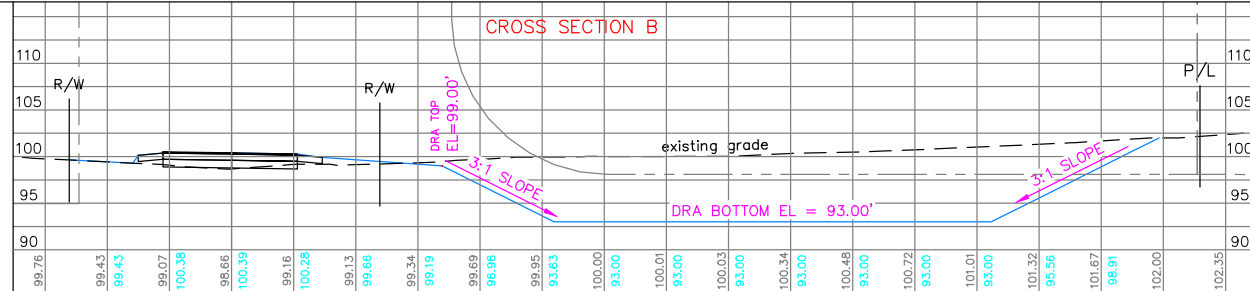


CONST. NEW DRA &
 SOD SIDE SLOPES -
 TOB = 99.00' MIN.
 TOS = 93.00'

SCALE FOR CROSS SECTIONS



PROPOSED DRA				
ELEV	AREA (SQ.FT.)	VOLUME (c.f.)	CUM. VOLUME (c.f.)	CUM. VOLUME (ac.-ft.)
93	8338			
94	9488	8907	8907	0.20
95	10705	10090	18997	0.44
96	11990	11342	30339	0.70
97	13342	12660	42999	0.99
98	14758	14044	57043	1.31
99	16232	15489	72531	1.67



SHEET DESCRIPTION: DRAINAGE RETENTION AREA NOTES

DATE	REV.	BY

PAYAL S. PANDYA, PE, CFM
 Registered Engineer No. 73210
 State of Florida, DATE: _____
 Valid only with embossed seal.

PREPARED BY: THE CITY OF OCALA
 CITY ENGINEER'S OFFICE
 STORMWATER ENGINEERING DIVISION

DRAWN BY:	MDM/DF
DESIGNED BY:	PSP
HORIZ.:	VARES
VERT.:	VARES
PROJ.#:	13201
F.B.#:	569/31
DATE DRAWN:	06/28/19

PROJECT DESCRIPTION: NE 16th AVE DRAINAGE IMPROVEMENTS

6 OF 17

